

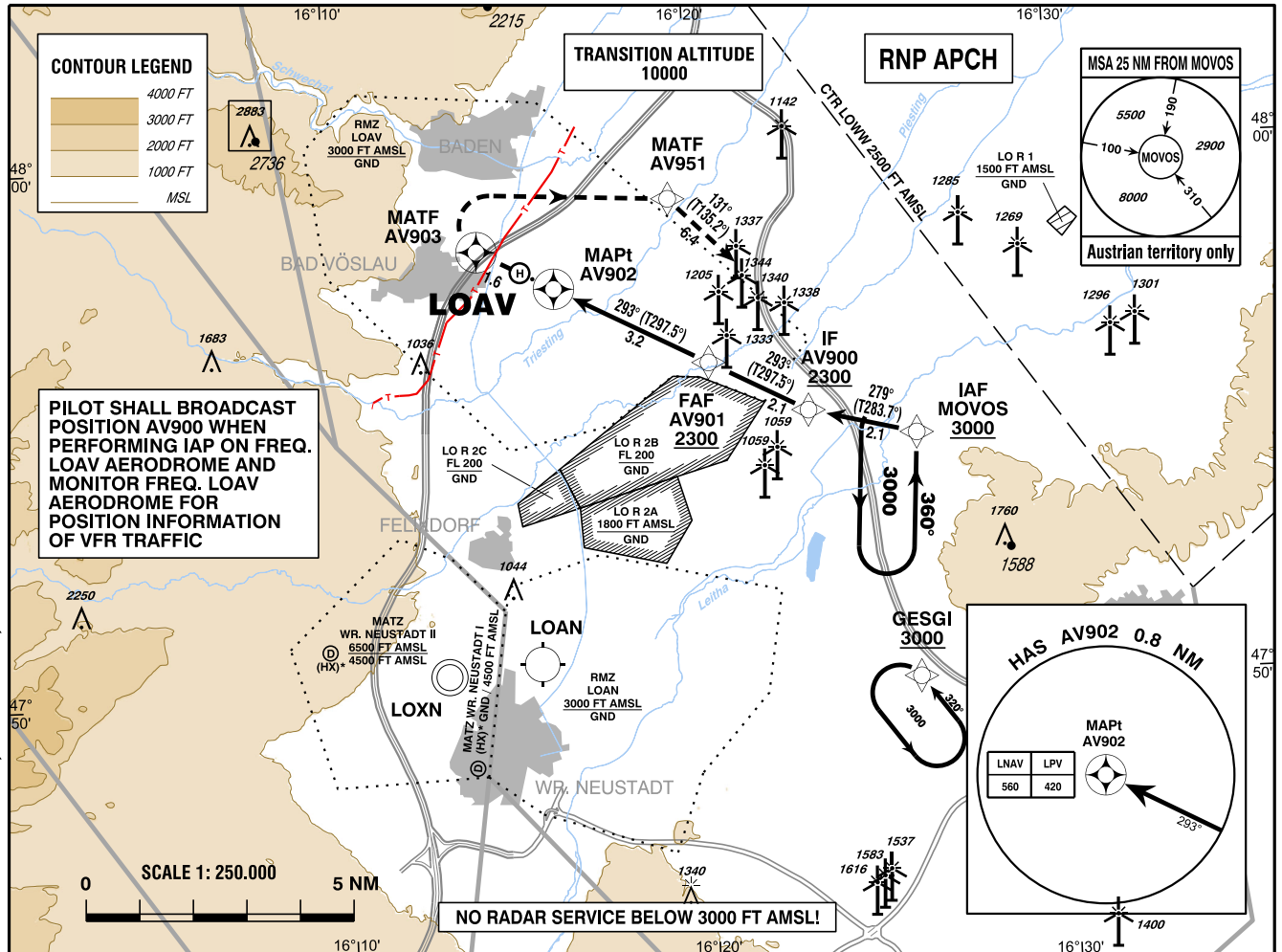
INSTRUMENT APPROACH CHART - ICAO

HRP ELEV 767 FT
VAR 5° E HGT RELATED TO HRP ELEV

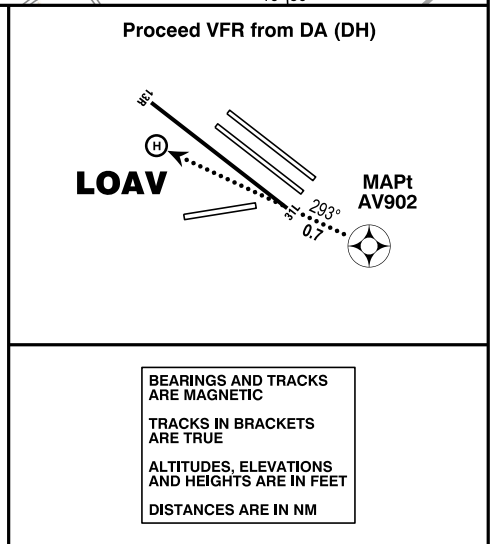
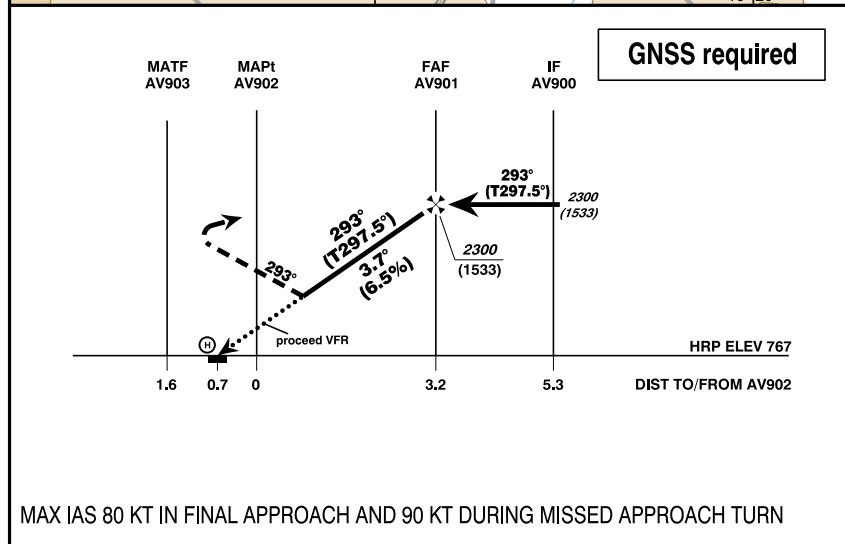
WIEN RADAR 134.675
WIEN INFORMATION 118.525
VÖSLAU RADIO 118.605

EGNOS CH 62373
E29A

VÖSLAU
ÖSTERREICH AUSTRIA
COPTER RNP 293
CAT H



CHANGE: CALL SIGN; OBSTACLES; EDITORIAL



MISSED APPROACH: CLIMB STRAIGHT TO AV903, TURN RIGHT DIRECT TO AV951 AND FOLLOW THE PUBLISHED TRACK TO MOVOS; CLIMB TO 3000 FT AMSL AND HOLD.

DA (DH) IN FT	MA CLIMB GRADIENT	H	QNH LOWW required				
LNNAV	6.3 %	1440 (670)					
LPV		1300 (530)					
DIST in NM to AV902		3	2	1			
ALTITUDE (HEIGHT)		2220 (1453)	1830 (1063)	1430 (663)			

AV901 to AV902 - DISTANCE 3.2 NM						
(Timing not authorized for defining the MAPt)						
	GS (KT)	60	70	80	90	100
AV901 - AV902	MIN : SEC	3:12	2:45	2:24	2:08	1:55
Rate of descent (6.5%)	FT / MIN	390	460	520	590	660

Instrument Approach Procedure Coding Table Vöslau COPTER RNP 293											
Path Terminator	Waypoint				Course/ Track ° MAG (° True)	DIST NM	Turn Direction	Constraints		Navigation Specification	Remarks
	Identifier	Type	Flyover	Coordinates				Level	Speed		
TF	MOVOS	IAF	no	N47 54 40.60 E016 26 14.08				A3000+	K120-	RNP APCH	
TF	AV900	IF	no	N47 55 09.77 E016 23 15.31	279° (283.7°)	2.1		A2300+		RNP APCH	
TF	AV901	FAF	no	N47 56 06.95 E016 20 31.90	293° (297.5°)	2.1	right	A2300+	K080-	RNP APCH	
TF	AV902	MAPt	yes	N47 57 35.48 E016 16 18.35	293° (297.5°)	3.2				RNP APCH	
TF	AV903	MATF	yes	N47 58 19.67 E016 14 11.54	293° (297.4°)	1.6				RNP APCH	
DF	AV951	MATF	no	N47 59 11.80 E016 19 33.70			right		K090-	RNP APCH	
TF	MOVOS	MAHF	yes	N47 54 40.60 E016 26 14.08	131° (135.2°)	6.4	right	A3000+	K120-	RNP APCH	
RNAV Holding											
Holding Point	Inbound Track ° True	Inbound Track ° MAG	Turn Direction	MAX IAS	Minimum Holding Altitude FT MSL / FL	Time	DIST NM	Remarks			
GESGI	323.8°	320°	left	K140-	A3000	1 MIN					
MOVOS	003.6°	360°	left	K120-	A3000	1 MIN					

**SBAS FAS Data Block Coding Table
Vöslau COPTER RNP 293**

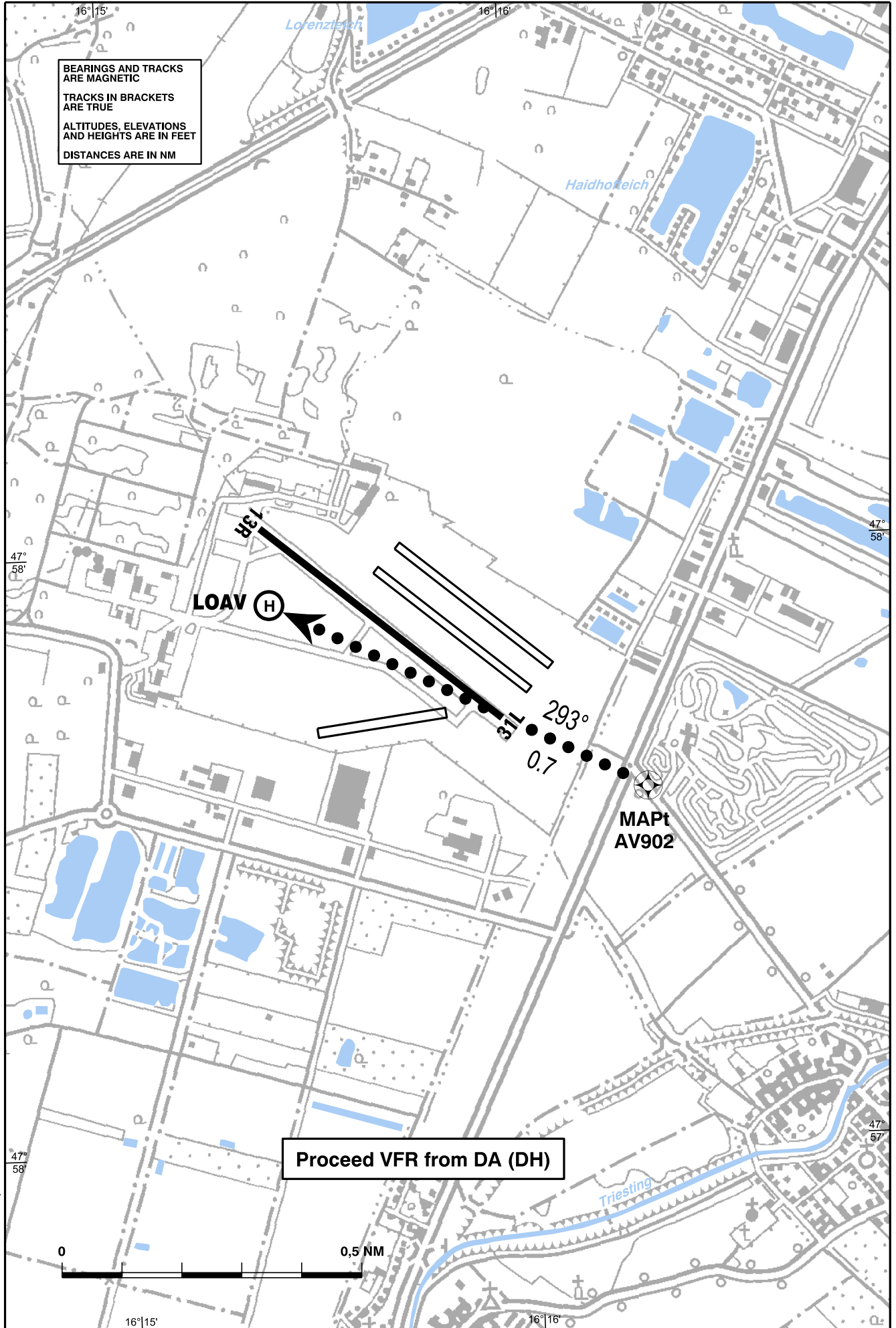
Input data	
Operation Type	0
SBAS Provider	1
Airport Identifier	LOAV
Runway	29
Runway Direction	0
Approach Performance Designator	0
Route Indicator	
Reference Path Data Selector	0
Reference Path Identifier	E29A
LTP/FTP Latitude	475747.4095N
LTP/FTP Longitude	0161544.1195E
LTP/FTP Ellipsoidal Height (metres)	279.5
FPAP Latitude	475827.5880N
Delta FPAP Latitude (seconds)	40.1785
FPAP Longitude	0161348.7775E
Delta FPAP Longitude (seconds)	-115.3420
Threshold Crossing Height	32.1
TCH Units Selector	1
Glidepath Angle (degrees)	3.70
Course Width (metres)	105.00
Length Offset (metres)	0
HAL (metres)	40.0
VAL (metres)	50.0
Output data	
Data Block	10 16 01 0F 0C 1D 00 00 01 39 32 05 23 64 95 14 EF 9F FA 06 EB 1E E5 39 01 E4 7A FC 82 82 72 01 64 00 C8 FA E9 17 4F 2D
Calculated CRC Value	E9174F2D
Required Additional Data	
ICAO Code	LO
LTP/FTP Orthometric Height (metres)	234.0
FPAP Orthometric Height (metres)	234.0

**INSTRUMENT
 APPROACH CHART**

VAR 5° E HRP ELEV 767 FT

WIEN RADAR	134.675
WIEN INFORMATION	118.525
VÖSLAU RADIO	118.605

BEARINGS AND TRACKS
 ARE MAGNETIC
 TRACKS IN BRACKETS
 ARE TRUE
 ALTITUDES, ELEVATIONS
 AND HEIGHTS ARE IN FEET
 DISTANCES ARE IN NM



Proceed VFR from DA (DH)

CHANGE: CALL SIGN; EDITORIAL